



Russell Hobbs

INSTRUCTIONS AND WARRANTY



MODEL 25090ZA

RUSSELL HOBBS ONE TEMP STEAM, SPRAY, DRY IRON

Extend your 1 year retail warranty to an additional
1 year by registering your purchase here:



Congratulations on purchasing our Russell Hobbs One Temp Steam, Spray, Dry Iron. Each unit is manufactured to ensure safety and reliability. Before using this appliance for the first time, please read the instruction manual carefully and keep it for future reference.

INTRODUCTION

Introducing you to the future of ironing with the One Temperature Iron. With one optimum heat that's safe to use on all iron-able fabrics, ironing can now be easy and effortless. Designed to leave you going full steam ahead with your ironing, you can smooth away every wrinkle, crumple and crease in your fabrics. Whether you're ironing your little one's uniform for their first day at school or pressing your partner's shirt for a job interview, the One Temperature Iron can do it all. There for the little moments and the big moments, the One Temperature Iron gives you freshly ironed clothes and peace of mind that those you care about most leave the house looking and feeling good.

The One Temp Steam Iron offers you an innovative way to iron garments. We all know the fuss with traditional irons: choosing the right temperature for tough and delicate fabrics, waiting for the iron to warm up and cool down to avoid the risk of damaging clothes with too hot an iron. Those hassles are things of the past with the One Temp Steam Iron.

The key to effective wrinkle removal is the steam. Historically, wrinkle removal was done with a very hot soleplate, then steam was added to enhance heat transfer and we could iron much faster. To get ideal steam, the soleplate temperature needs to be just above the steam temperature. In the past, a large amount of steam at this ideal temperature would have led to water leakage. We have developed a special soleplate design that generates a consistent output of moisture-rich steam that penetrates deep into the fabric for fast ironing with no risk of water leakage.

Ironing is now made really simple! No temperature adjustment, no scorching, no waiting for the iron to heat up or cool down. Ironing takes less time, no matter who does it. Iron all types of ironable fabrics, in any order, without the need to adjust any temperature settings.

With this Ideal Temp technology, every single garment can be ironed effectively and safely.

FEATURES OF THE RUSSELL HOBBS IDEAL TEMP STEAM, SPRAY, DRY IRON

- 2200W
- One temperature – always the perfect temperature
- Continuous steam rate: 20g /min
- Convenient ultra-long 2m swivel cord, with 360 degree freedom and cord clip for storage
- Overheat safety protection circuit

- Ceramic soleplate
- Safe for all fabrics*
- 60% smoother glide**
- Includes water measuring cup
- With indicator light and heel rest
- Water spray and anti-drip feature
- No need to pre-sort fabrics, for faster more efficient ironing
- Vertical steam feature ideal for suits, dresses, curtains, hanging garments and delicate fabrics
- High wattage for faster heat-up time and performance – time saving on those dreaded laundry days
- Water tank capacity: 360ml
- Anti-drip feature means water won't drip onto your clothes as you iron
- Anti-calc feature
- 3-way Auto shut-off feature
- Comfortable soft grip handle
- For domestic use only
- 2 year warranty (1 year retail • 1 year extended upon online registration of product • visit www.russellhobbs.co.za)

*Safe for all ironable fabrics

**Vs Russell Hobbs Standard Ceramic

IMPORTANT SAFEGUARDS

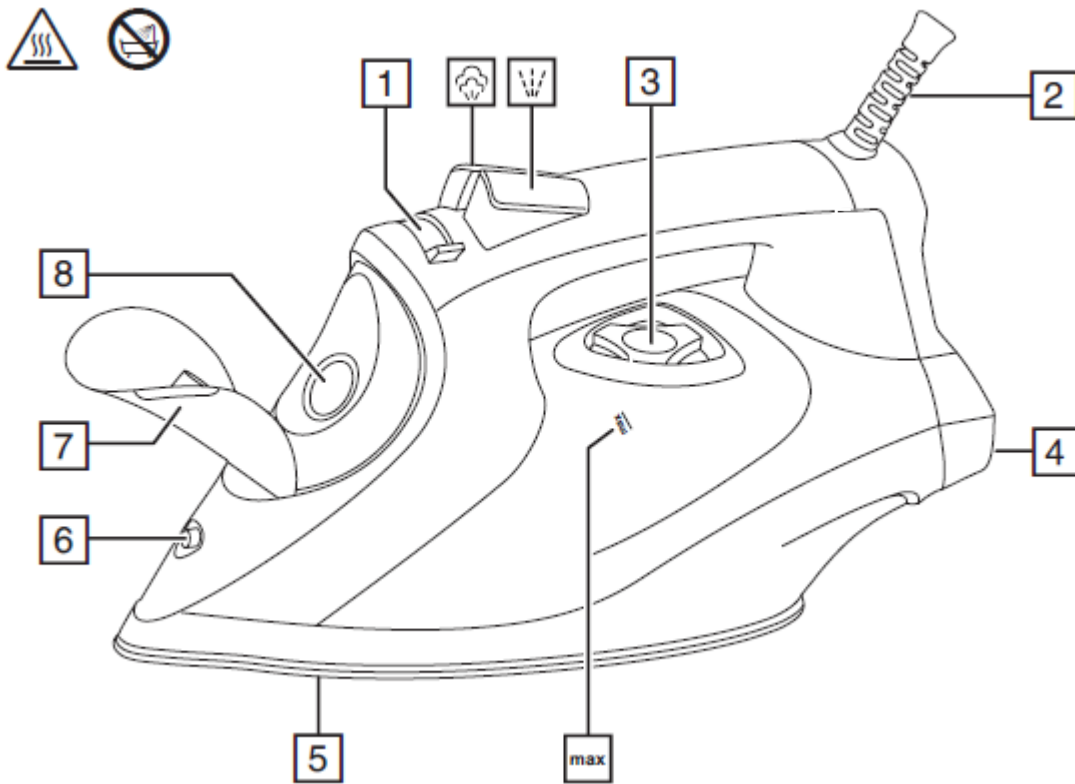
When using any electrical appliance, basic safety precautions should always be followed including the following:

1. Please read the instructions carefully before using any appliance.
2. Always ensure that the voltage on the rating label corresponds to the mains voltage in your home.
3. Incorrect operation and improper use can damage the appliance and cause injury to the user.
4. The appliance is intended for household use only. Commercial use invalids the warranty and the supplier cannot be held responsible for injury or damage caused when using the appliance for any other purpose than that intended.
5. Avoid any contact with moving parts.
6. This appliance is not intended for use by persons (including children) with reduced physical, sensory or mental capabilities, or lack of experience and knowledge, unless they have been given supervision or instruction concerning use of the appliance by a person responsible for their safety.

7. Children should be supervised to ensure that they do not play with the appliance.
8. Check the power cord and plug regularly for any damage. If the cord or the plug is damaged, it must be replaced by the manufacturer or a qualified person in order to avoid an electrical hazard.
9. Do not use the appliance if it leaks, has been dropped or damaged in any way. In case of damage, take the unit in for examination and/or repair by an authorised service agent
10. To reduce the risk of electric shock, do not immerse or expose the electrical assembly, plug or the power cord to water or any other liquid.
11. Never immerse the unit in water or any other liquid for cleaning purposes.
12. Remove the plug from the socket by gripping the plug. Do not pull on the cord to disconnect the appliance from the mains. Always unplug the unit when not in use, before cleaning or when adding or removing parts.
13. The use of accessory attachments that are not recommended or supplied by the manufacturer may result in injuries, fire or electric shock.
14. A short cord is provided to reduce the hazards resulting from becoming entangled in or tripping over a longer cord.
15. Do not let the cord hang over the edge of a table or counter. Ensure that the cord is not in a position where it can be pulled on inadvertently.
16. Do not allow the cord to touch hot surfaces and do not place on or near flammable goods, near an open flame, hot gas or electric burner or a heated oven.
17. Use of an extension cord with this appliance is not recommended. However, if it is necessary to use an extension lead, ensure that the lead is suited to the power consumption of the appliance to avoid overheating of the extension cord, appliance or plug point. Do not place the extension cord in a position where it can be pulled on by children or animals or tripped over.
18. This appliance is not suitable for outdoor use. Do not use this appliance for anything other than its intended use.
19. DO NOT carry the appliance by the power cord.
20. Always operate the appliance on a smooth, even, stable surface. Do not place the unit on a hot surface.
21. Ensure that the steam control is in the "0" or "OFF" position after each use.
22. Don't iron clothing while it's being worn – you'll burn or scald the wearer.
23. Don't touch the soleplate and keep away from the steam emitting from it.
24. Take care when emptying the iron – it may contain hot water.
25. Don't use the iron in the vicinity of children.
26. Use the iron on a stable, level, heat-resistant surface, preferably an ironing board.
27. Don't leave the iron unattended while plugged in, or while it's standing on the ironing board. It could be knocked over by you, by a child or by a pet.
28. Don't fill the iron directly from the tap, use the water beaker provided.
29. Don't fill past the MAX level mark shown on the water tank or water leak from the iron during use.

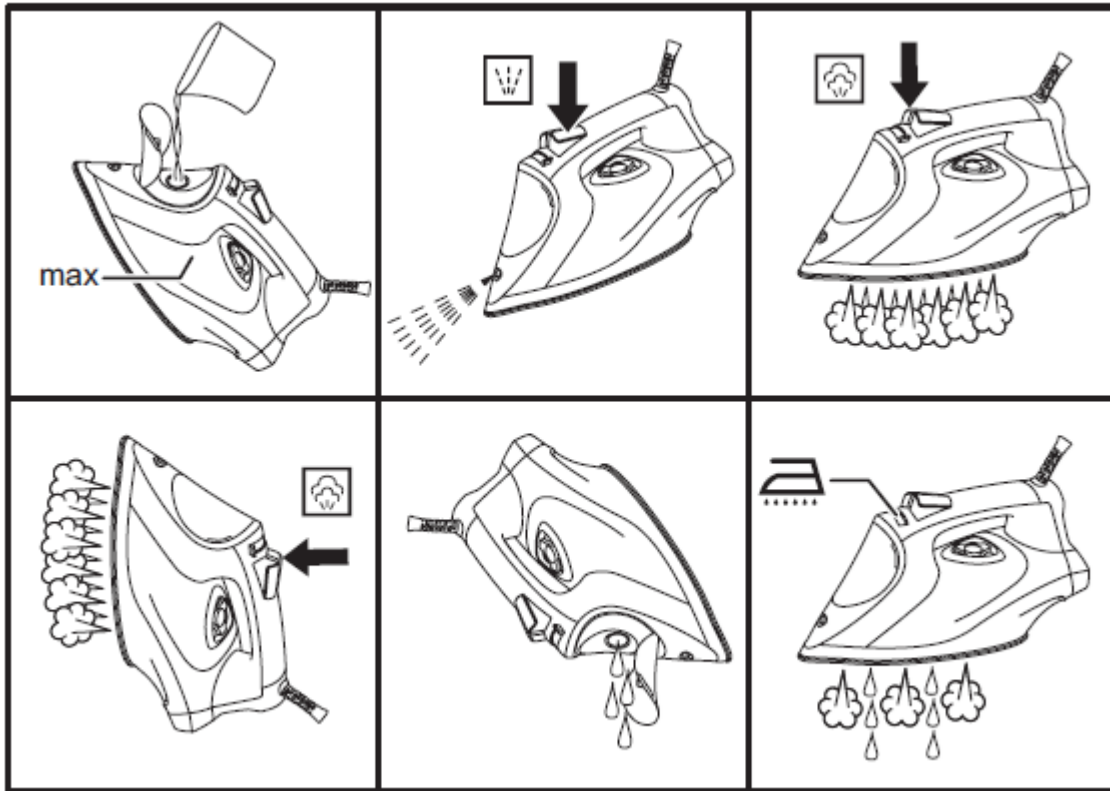
30. Deposits or minerals in the water supply will generate scale and block the steam holes in the soleplate. It is advisable to use distilled water when filling your iron. Do not use chemically distilled water.
31. Leave the iron upright to cool down fully before cleaning and storing away.
32. Don't use the iron for any purpose other than those described in these instructions.
33. Take care not to scratch the soleplate – avoid buttons, zips, etc.
34. When placing the iron on its heel rest, ensure that the surface on which it has been placed is clean and stable.
35. The iron has a protective thermal fuse, which will blow if it overheats. If this happens, the iron will stop working and must be returned for repair.
36. Always unwind and straighten the power cord before use.
37. Unplug the iron from the mains electrical supply before:
 - Cleaning
 - Filling with water or emptying the water tank
 - Immediately after use
 - When not in use
 - When moving
38. The appliance generates high temperature steam. Always handle with care and warn other users of potential danger.
39. Don't let the power cord touch the soleplate as it may result in damage as well as a potential fire hazard.
40. Empty the water tank after each use.
41. Do not add perfume, vinegar or other chemical liquids into the water tank as they may result in damage to the appliance.
42. Do not operate this appliance by means of an external timer or remote control system.
43. The manufacturer does not accept responsibility for any damage or injury caused by improper or incorrect use, or for repairs carried out by unauthorised personnel.
44. In case of technical problems, switch off the appliance and do not attempt to repair it yourself. Return the appliance to an authorised service facility for examination, adjustment or repair. Always insist on the use of original spare parts. Failure to comply with the above mentioned pre-cautions and instructions, could affect the safe operation of this appliance.

PARTS DIAGRAM



PARTS DIAGRAM

- | | |
|-------------------------|-----------------|
| 1. Steam control | 5. Soleplate |
| 2. Swivel Cord | 6. Spray nozzle |
| 3. SmartLight Indicator | 7. Cover |
| 4. Heel | 8. Water inlet |



OPERATING INSTRUCTIONS

BEFORE FIRST USE

Remove any protective films or stickers from the soleplate and the iron's body.

Wipe the soleplate with a dry soft cloth.

Unwind and straighten the power cord.

Fill the iron as described in the section “**How to Fill the Water Tank**”. Connect the appliance to a suitable mains power supply outlet. The light will glow to indicate that the iron is heating up. Once the light turns off, then the required temperature is reached. Move the steam slider to the **ON** position - steam starts to come out from the vents on the soleplate. Begin first time ironing with an old towel. When the water tank is empty and there is no more steam that can be produced; the preparation work is completed. The iron is now ready for proper use.

Note: It is normal for small amount of smoke to be produced the first time you use the iron, this will quickly disappear. When using the steam function for the first time, do not direct the steam towards the laundry, as there could be debris from the steam vents.

HINTS AND TIPS FOR IRONING

The Ideal Temp technology enables you to iron all types of ironable fabrics, in any order, without the need to adjust any temperature settings. Fabrics with these symbols (figure 1) are ironable, for

example linen, cotton, polyester, silk, wool, viscose and rayon.







Figure 1.

Fabrics with this symbol are not ironable (figure 2). These fabrics include synthetic fabrics such as Spandex or elastane, Spandex-mixed fabrics and polyolefins (e.g. polypropylene), as well as prints on garments. Do not iron non-ironable fabrics.



Figure 2.

READ THE GARMENT LABELS AND FOLLOW THE MANUFACTURER’S IRONING INSTRUCTIONS THAT ARE OFTEN SHOWN BY SYMBOLS SIMILAR TO THE TABLE BELOW.

Symbol	Fabric	Variable Steam	Burst of Steam	Water Spray
	Synthetic fibres/ Silk	No	No	Yes
	Wool	No	No	Yes
	Cotton/ Linen	Yes	Yes	Yes
	Note: this symbol means that the article cannot be ironed			

1. “Test iron” a small area on the backside or inside of the garment if you are unsure about the type of fabric.
2. You may need to press the steam button a few times to activate the burst of steam function.
3. Always keep the soleplate smooth – avoid contact with sharp, hard, metal objects.

Minimizing wrinkles while drying:

Start wrinkle removal early in the drying process by spreading out the laundry properly after washing. Put the garments on hangers to make them dry naturally with less wrinkles.

Example: Ironing a shirt

1. Start ironing the time-consuming parts such as collar, cuffs and sleeves.
2. Next, iron the bigger parts like the front and back. By doing this, you prevent wrinkling the bigger parts when you are busy ironing the time-consuming ones.
3. When you iron a collar, start on its underside and iron from the outside (the pointy end) inwards. Turn over and repeat. Fold down the collar and press the edge for a crisp finish.
4. Iron on the reverse side of the buttons for more effective and faster ironing.

HOW TO FILL THE WATER TANK

1. Ensure that the appliance is disconnected from the main power supply outlet.
2. Ensure that the steam slider is in the “0”/ “no steam”/ “OFF” position.
3. Open the water inlet cover.
4. Place the iron on its heel rest and tilt forward approximately at a 45 degree angle.
5. Fill water through the water-filling inlet hole up to the **MAX** level mark indicated on the side of the iron/ water tank. Never fill above this mark.
6. Close the water inlet cover and wipe off any spillages on Iron.

Note: This appliance has been designed to be used with tap water. If you live in an area with hard water, fast limescale build-up may occur. Therefore, it is recommended to use distilled or demineralized water to prolong the lifetime of the appliance. Do not put perfume, vinegar, starch, descaling agents, ironing aids or other chemicals in the water tank, as your appliance is not designed to work with these chemicals.

HEATING UP

Insert the plug into an earthed wall socket. The SmartLight ready indicator light will turn on. The iron will be ready for use when the SmartLight turns off.

WATER SPRAY FUNCTION

This function can be used at any time and it does not affect other functions. Press the spray button to spray water on clothes, as often as required. Moistening the garment to be ironed often helps to remove stubborn creases.

NOTE: When using the water spray function, ensure that there is enough water in the water tank. You may have to pump the spray button several times during first use in order to start the spraying function.

DRY IRONING

This function irons without the use of steam.

1. Connect the iron with a suitable mains power supply outlet.
2. Set the steam slider to position **“0”/ “no steam”/ “OFF”**.
3. The SmartLight will glow to indicate that the iron is heating up.
4. When the required temperature is reached, the SmartLight will turn off. The iron is ready to use.
5. After use, disconnect the iron from mains power supply outlet.
6. Allow the iron to cool and follow the cleaning and maintenance instructions.

STEAM IRONING

1. Fill the iron as described in **"How to Fill the Water Tank"**.
2. Connect the iron to a suitable mains power supply outlet.
3. The SmartLight will glow to indicate that the iron is heating up.
4. The SmartLight will turn off when the required temperature is reached. Note that during ironing, the SmartLight on the iron automatically switches on/off as the thermostat maintains the ideal temperature (you may continue ironing during this process).
5. The iron is ready for use.
6. Set the steam slider correctly. Increase steam output by pushing the steam slider to the right and decrease steam output by pushing the steam slider to the left. The steam rate can be adjusted according to your requirement, however for the best results and shortest ironing time, we strongly recommend that you iron all ironable fabrics at the maximum steam output setting. Caution: Synthetic fabric, Nylon, Synthetic Silk and Silk cannot be steam ironed as it will damage the finish of the fabric.
7. After use, move the steam slider to the **“0”/ “no steam”/ “OFF”** position and disconnect the iron from mains power supply outlet.
8. Allow the iron to cool and follow the cleaning and maintenance instructions.

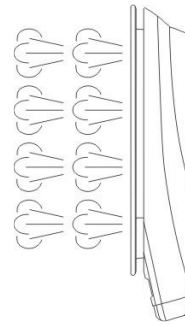
Note: This iron has an anti-drip feature: if you are ironing garments for long period of time, the soleplate temperature may decrease. The anti-drip function will ensure that water does not leak from the soleplate during this time.

BURST OF STEAM

This function works well for tough wrinkles and heavy fabrics. By pressing the burst of steam button, an intense burst of steam is emitted from the soleplate, enhancing the distribution of steam into every part of the garment. This can be very useful when removing stubborn creases. This function can be used once the iron has reached maximum temperature – here the SmartLight indicator light will turn off when ready. For optimal performance, it is recommended to press the burst of steam button at intervals of 3 (three) seconds. Stubborn creases should be removed within 3 (three) burst of steam button presses.

BURST OF STEAM IN VERTICAL POSITION

Burst of steam can also be applied when holding the iron in a vertical position. This function is useful for removing wrinkles on garments in a hanging position, hanging curtains, or other hanging fabrics.




- Hold the iron in a vertical position.
- Press and release the burst of steam button and touch the garment lightly with the soleplate. Tip: Pull the garment with one hand to stretch it for more effective wrinkle removal.


Note: It may be necessary to press the burst of steam button few times to start this function. During the use of 'Burst of Steam', stop ironing when the SmartLight turns on and then start ironing again only after the SmartLight has turned off.

Warning: Do not apply steam on any clothes or fabrics that are being worn by human or pets. To prevent burns, do not direct the steam at people. The temperature of the steam is very hot and will burn or scald.

SELF-CLEANING

This function removes the scale and minerals built up in the Steam Chamber and prevents scale from clogging the steam vents. The iron will remain in the best condition if this function is performed once every two weeks. You may choose to use the function more frequently depending on the hardness of the water used or water available in your local area.

1. Make sure that the appliance is unplugged from the mains supply outlet.
2. Set the steam slider to the “0”/ “no steam” / “OFF”  position.
3. Fill the iron as described in “**How to Fill the Water Tank**” and fill the water tank up to the

- MAX** position. Do not put vinegar or other descaling agents in the water tank.
4. Place the iron on a stable surface in an upright standing position.
 5. Connect the iron to mains supply outlet.
 6. Allow the iron to heat up. The SmartLight will glow to indicate that the iron is heating up.
 7. The SmartLight will turn off when the required temperature is reached.
 8. Disconnect the iron from mains power supply outlet.
 9. Hold the iron horizontally over a sink.
 10. Hold/ press the self-cleaning button  in and gently shake the iron to and fro.
 11. Steam and boiling hot water will emit from the holes on the soleplate which contains impurities, scale, minerals and flakes (if any) that deposited in the Steam Chamber from previous use.
 12. Release the self-cleaning button as soon as all the water in the tank has been used up.
 13. Repeat the self-cleaning process if the iron still contains a lot of impurities.
 14. After the self-cleaning process, put the plug into the wall socket and let the iron heat up to allow the soleplate to dry.
 15. When the SmartLight turns on, move the iron gently over a piece of used cloth to remove any water stains that may have formed on the soleplate.
 16. Unplug the iron and let it cool down before you follow storage instructions.

Note: Be careful when steam and boiling water come out of the soleplate. Keep skin/ body away from the steam and boiling water. Impurities and flakes (if any) are flushed out. Do not put vinegar or other descaling agents in the water tank.

ANTI-SCALE/ CALCIUM FEATURE

An anti-scale agent has been incorporated as an advanced feature in the design of this iron. It is an extra measure to help prevent limescale/ calcium build-up and prolong the life of your iron.

* Please kindly note that products returned under warranty with faults due to scale will be subject to a repair charge.

3-WAY AUTO SHUT-OFF FEATURE

The Ideal Temp iron will automatically turn off if left unattended in a vertical position for 8 minutes, if left for 30 seconds in a horizontal position or if the Ideal Temp iron falls to either the left or right side and is left for 30 seconds.

CLEANING AND MAINTENANCE

- Regularly rinse the water tank with water. Empty the water tank after you have rinsed it.
- After using, lift the iron with the water inlet filling hole downwards to empty the remaining water from the water tank into the sink.
- Insert the plug into the socket, set the steam slider on and let the remaining water in the water tank evaporate as well as let the soleplate dry. Once done, ensure that the steam slider is set to the “0”/ “no steam”/ “OFF” position.
- Unplug the iron and let it cool down before cleaning or storing it. Always remember to unplug the unit from the electrical outlet when not in use and before cleaning.
- Wipe the soleplate with a damp cloth and a non-abrasive (liquid) cleaner. Once done, buff the soleplate with a clean dry cloth.
- If fiber has adhered/ stuck to the soleplate, use a slightly dampened cloth to wipe the fiber from the soleplate.
- If scale has blocked a steam hole, please remove it gently using a toothpick. Be careful not to damage the surface of the soleplate
- The body of the appliance should be cleaned with a damp cloth. Do not let water enter the appliance and cause damage to any electrical components.
- Do not use bleach or other abrasive substance or solvents to clean your appliance as it can be damaging to the finish.
- Do not immerse the appliance in water or any other liquid, or hold it under a running tap to clean.
- This appliance is for household use only and is not user-serviceable.
- Do not open or change any parts by yourself. Please refer to a qualified electrical service department or return to the supplier if servicing is necessary.

Note: Never use sharp or rough objects to remove deposits from the soleplate. To keep the soleplate smooth, avoid contact with metal objects. Never use a scouring pad, vinegar or other chemicals to clean the soleplate. Never use any abrasive or descaling agents to clean the iron.

STORING THE APPLIANCE

- Complete Cleaning and Maintenance as instructed above.
- Ensure that the steam slider is set to the “0”/ “no steam”/ “OFF” position.
- Ensure that all parts are dry before storing.
- Store only once the iron has cooled completely.
- Store the appliance vertically in its box or in a clean, dry place.

- Never store the appliance while it is still wet or dirty.
- Wind the power cord around the cord storage area and fix it with the cord clip. Put the power cord below the CordFix indicator to ensure that the mains cord does not touch the soleplate during storage.



Disposing of a household appliance separately avoids possible negative consequences for the environment and health, deriving from inappropriate disposal and enables the constituent materials to be recovered to obtain significant savings in energy and resources. As a reminder of the need to dispose of household appliance separately, the product is marked with a crossed-out wheeled dustbin.

TROUBLE-SHOOTING

Problem	Possible Reasons	Solution
Not enough heat	The SmartLight indicator light is still on and the iron is still heating up. The iron is unplugged.	Wait until the SmartLight has turned off – the iron is now ready. Check if the iron is plugged into the mains power supply.
No steam is being produced or leakage.	The SmartLight indicator light is still on and the iron is still heating up. The water tank is empty. Possibly faulty anti-drip mechanism.	Wait until the SmartLight has turned off – the iron is now ready. Fill the water tank to the MAX position. Return the product to an authorized service centre for evaluation.
No burst of steam or no vertical steam.	The (vertical) burst of steam function has been used too often within a very short period.	Continue ironing in a horizontal position and wait a few minutes before using the (vertical) burst of steam function again.

	The iron is not hot enough.	Wait until the SmartLight has turned off – the iron is now ready.
Leaking water from soleplate.	There is still not enough heat being produced.	Use the steam button only after the SmartLight has turned off.
	The water is over the MAX water level position.	Pour out the remaining water.
Little Steam	Check if the steam slider is in the correct position.	Set the steam slider to the correct position.
	A steam hole is blocked.	Clean the steam hole as indicated in the cleaning and maintenance section.
	Too little water in the water tank.	Fill water into the tank as per earlier instructions.
No Spraying	There is not enough pressure or air inside.	Press the spray nozzle by hand and push the spray button several times continuously.

SERVICING THE APPLIANCE

There are no user serviceable parts in this appliance. If the unit is not operating correctly, please check the following:

- You have followed the instructions correctly
- That the unit has been wired correctly and that the wall socket is switched on.
- That the mains power supply is ON.
- That the plug is firmly in the mains socket.

If the appliance still does not work after checking the above:

- Consult the retailer for possible repair or replacement. If the retailer fails to resolve the problem and you need to return the appliance, make sure that:

- The unit is packed carefully back into its original packaging.
- Proof of purchase is attached.

- A reason is provided for why it is being returned.

If the supply cord is damaged, it must be replaced by the manufacturer or an authorised service agent, in order to avoid any hazard. If service becomes necessary within the warranty period, the appliance should be returned to an approved Home of Living Brands (Pty) Limited service centre. Servicing outside the warranty period is still available, but will, however, be chargeable.

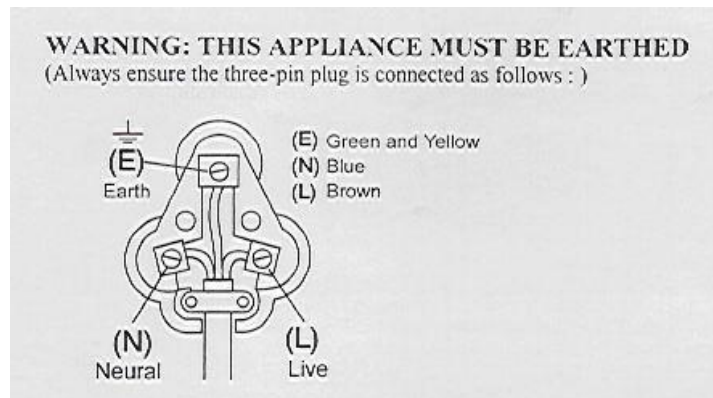
CHANGING THE PLUG

Should the need arise to change the fitted plug, follow the instructions below.

This unit is designed to operate on the stated current only. Connecting to other power sources may damage the appliance. Connect a three-pin plug as follows:

The wires in this mains lead are coloured in accordance with the following code:

Green/Yellow	= Earth
Blue	= Neutral
Brown	= Live



NOTE: Products returned under warranty with faults due to scale will be subject to a repair charge.

**PLEASE AFFIX YOUR PROOF OF PURCHASE/RECEIPT HERE
IN THE EVENT OF A CLAIM UNDER WARRANTY THIS RECEIPT MUST BE PRODUCED.**

2 YEAR WARRANTY

*1 year retail | 1 year
extended warranty upon
registration**

visit www.russellhobbs.co.za

W A R R A N T Y A N D E X T E N D E D W A R R A N T Y

1. Home of Living Brands (Pty) Limited ("Home of Living Brands") warrants to the original purchaser of this product ("the customer") that this product will be free of defects in quality and workmanship which under normal personal, family or household use and purpose may manifest within a period of 1 (one) year from the date of purchase ("warranty period").
2. Home of Living Brands shall extend the warranty period for a further period of 1(one) year ("extended warranty period*"), on condition that the purchaser registers the product on the website, within 12 months from the date of purchase of the product. The website address for registration is as follows: <http://russellhobbs.co.za/info-pages/warranty-info.aspx>. The extended warranty period only applies to products purchased on or after 1 October 2017.
3. Where the customer has purchased a product and it breaks, is defective or does not work properly for the intended purpose, the customer must notify the supplier from whom the customer bought the product ("the supplier") thereof within the warranty period or if applicable, the extended warranty period. Any claim in terms of this warranty must be supported by a proof of purchase. If proof of purchase is not available, then repair, and/or service charges may be payable by the customer to the supplier.
4. The faulty product must be taken to the supplier's service centre to exercise the warranty.
5. The supplier will refund, repair or exchange the product in terms of this warranty subject to legislative requirements. This warranty shall be valid only where the customer has not broken the product themselves, or used the product for something that it is not supposed to be used for. The warranty does not include and will not be construed to cover products damaged as a result of disaster, misuse, tamper, abuse or any unauthorised modification or repair of the product.
6. This warranty will extend only to the product provided at the date of the purchase and not to any expendables attached or installed by the customer.
7. If the customer requests that the supplier repairs the product and the product breaks or fails to work properly within 3 (three) months of the repair and not as a result of misuse, tampering or modification by or on behalf of the customer, then the supplier may replace the product or pay a refund to the customer, subject to the supplier's discretion.
8. The customer may be responsible for certain costs where products returned are not in the original packaging, or if the packaging is damaged. This will be deducted from any refund paid to the customer.

HOME OF LIVING BRANDS (PTY) LTD (JOHANNESBURG)

JOHANNESBURG
CAPE TOWN
DURBAN

TEL NO. (011) 490-9600
TEL NO. (021) 552-5161
TEL NO. (031) 303-1163

www.homeoflivingbrands.com
www.russellhobbs.co.za
www.facebook.com/RussellHobbsSA