



Russell Hobbs



RHMP25

RUSSELL HOBBS HYDRO-PURE 25L MINERAL POT

Congratulations on purchasing our Russell Hobbs Hydro-Pure 25L Mineral Pot. Each unit is manufactured to ensure safety and reliability. Before using this appliance for the first time, please read the instruction manual carefully and keep it for future reference

FEATURES OF THE RUSSELL HOBBS HYDRO-PURE 25L MINERAL POT

- Elegant and modern finish
- Portable and Compact unit
- Purified water – wherever you go!
- 25L Capacity to supply more clean and healthy drinking water
- Upper tank capacity 10L
- Lower tank capacity 15L
- Reduces bacteria found in normal tap water up to 99.99%
- Provides a healthier water option and reduces chlorine by more than 85%
- Produces cleaner fresher drinking water
- 3 Stages Filtration: Water is filtered by sediment, Carbon and Ultra Filtration protection
- Removes odour and other chemical contaminations found in normal tap water
- For domestic use only
- 2 year warranty (1 year retail - 1 year extended warranty upon registration visit www.russellhobbs.co.za)

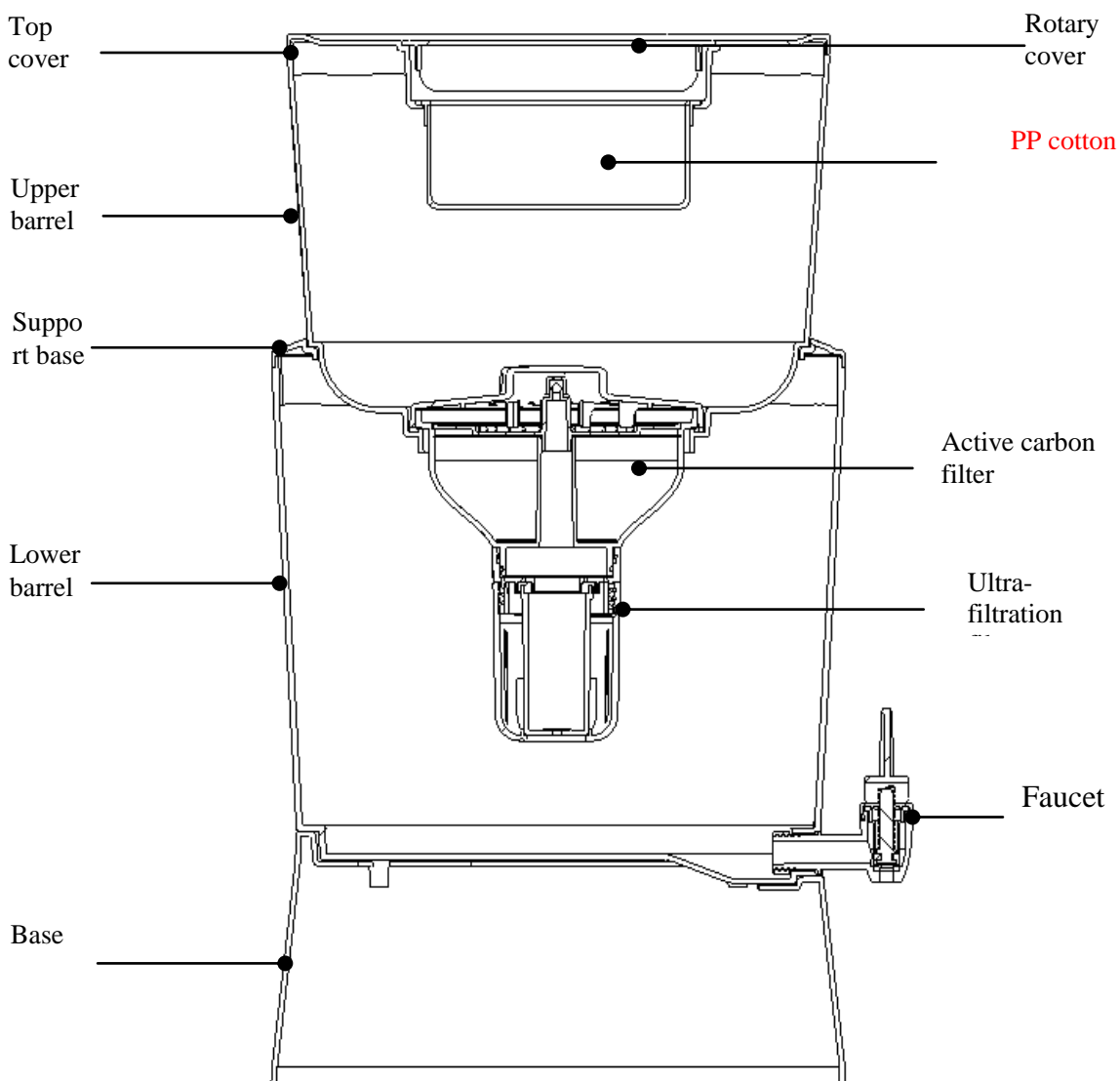
TECHNICAL PARAMETERS

Model	RHMP25
Dimension	Assembly size: 322*289*505mm; carton size: 302*302*300mm
Capacity of upper barrel	10L
Capacity of lower barrel	15L
Filter	PP cotton +active carbon +ultra-filtration
Service life of filter	6~12 months (the replacement cycle is subject to the local water quality)
Applicable water temperature	4~38°C
Filtering capacity	Active Carbon: reduce the chlorine and absorb organic contaminants
	UF Membrane: reduce sediment, suspended Solid, bacteria
Working range	For cold tap water supply only

IMPORTANT SAFEGAURDS

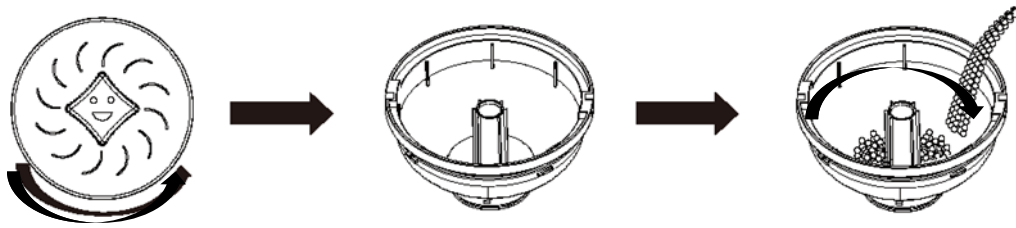
1. Please store the water purifier barrel in cool place without exposing it to direct sunlight and far from any heat source.
2. If the water purifier barrel won't be used for a long period it is suggested to discharge water from the water purifier barrel.
3. If the water purifier barrel has been in contact with foods which may possibly cause color changing, please clean it as soon as possible.
4. The seal ring is applied with food class sealing oil before delivery, therefore making it easier for installation
5. Since the water quality differs in depending on your area, please clean the upper and lower water barrels at least once a month.
6. Please put the product on the even flat surface place and avoid putting it on the inclined desk or surface where it may fall.

PARTS DIAGRAM



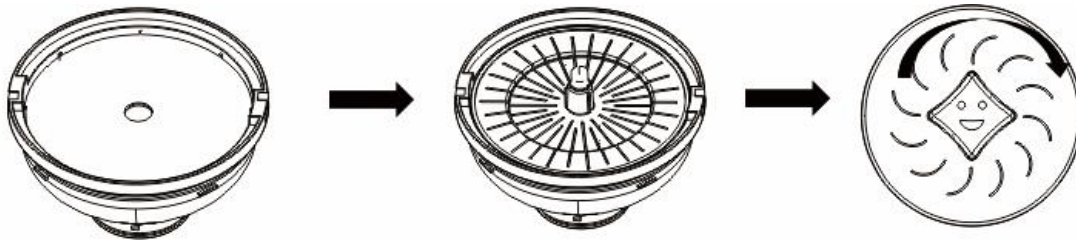
INSTALLATION

1. INSTALL THE ACTIVE CARBON FILTER



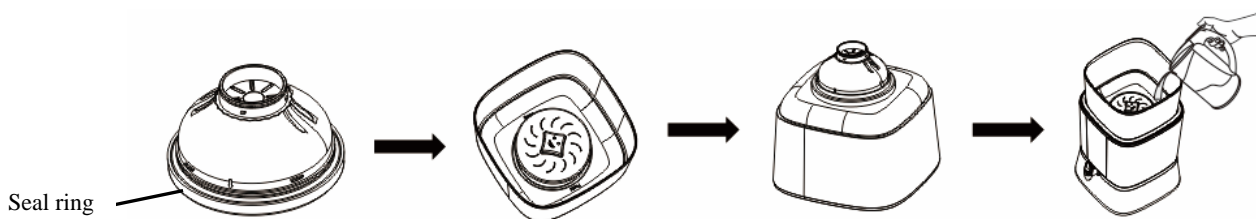
- a) Open the cover anticlockwise.
- b) Install the lower part of the filter housing
- c) Pour the granules of carbon into the inside wall of the filter housing

PLEASE NOTE: Do not pour the granules of carbon into the central pipe of the filter housing



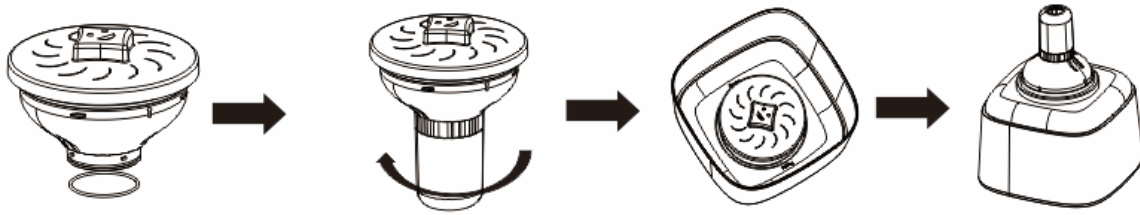
4. Install the upper non-woven fabric at the top of the filter housing.
5. Install the upper top cover.
6. Turn the cover clockwise till it makes “click” sound, which means it has been secured into place.

2. FLUSH THE ACTIVE CARBON FILTER



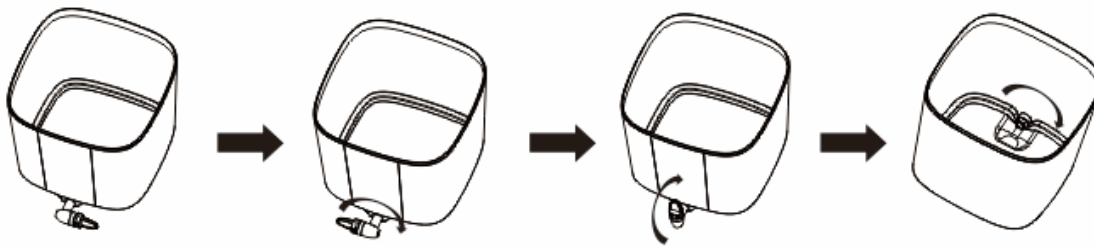
1. Install the seal ring at the top of the filter housing
2. Press the filter cover into the upper barrel
3. Turnover and check that the filter is securely fitted into the upper barrel
4. Put on the lower barrel, Pour water at the top to flush the carbon filter with tap water for about 5min until it doesn't output black water

3. INSTALLATION OF ULTRA-FILTRATION FILTER



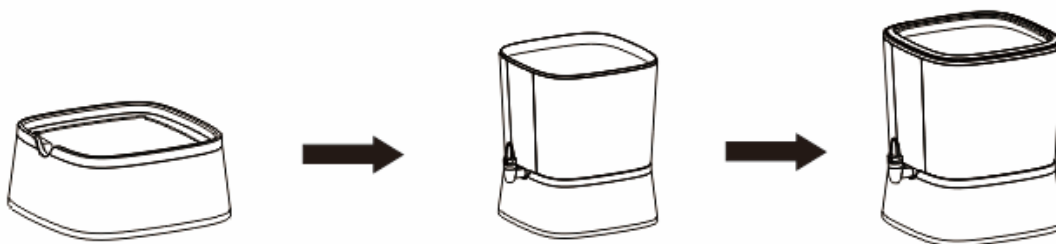
1. Install the seal ring at the bottom of the active carbon filter.
2. Install UF Filter into the bottom of the active carbon filter and tighten it by turning it in a clockwise motion.
3. Press the filter cover into the upper barrel
4. Turnover and check that the filter is secured into the upper barrel

4. INSTALL THE TAP FAUCET



1. Insert the faucet into the lower barrel.
2. Turn it clockwise until secured into place.
3. Rotate till the faucet is in the middle.
4. Tighten the nut clockwise.

5. INSTALL THE WHOLE UNIT



1. Put the base on a flat stable surface
2. Put the lower barrel with faucet on top of the base.
3. Put the support base on the upper barrel.



4. Put the upper barrel with filter on the support base.

5. Install the top cover.

6. Install the non-woven fabric and rotary cover.

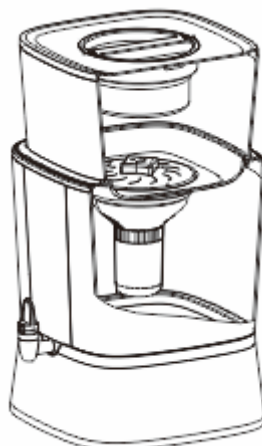
IMPORTANT NOTES:

1. The filter must be thoroughly flushed before using the active carbon filter for the first time, refer to 2 for the method.

2. Open the rotary cover; pour tap water into it, as shown in drawing below.



3. Please do not pour too much tap water since the filtering speed is slow, stop pouring water once the upper barrel is full of water.



5. It is suggested to pour water for filtering when the water level of the lower barrel is lower than the mark, thus avoiding the risk that the filtered water overflows the base.

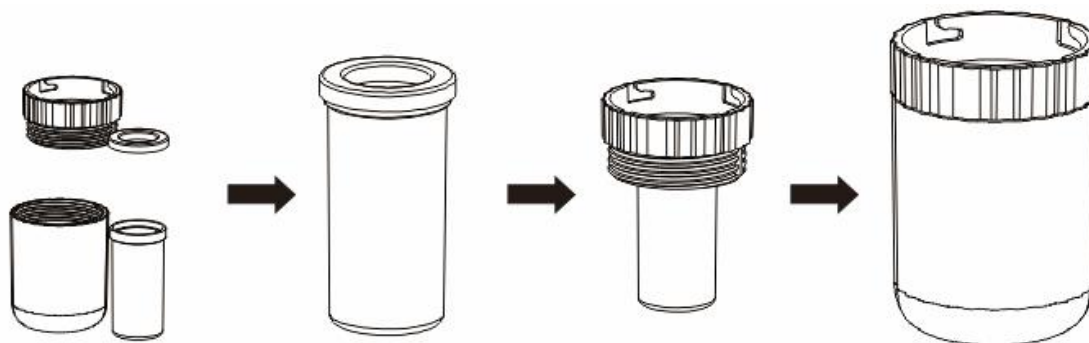
MAINTENANCE OF FILTER

S/N	Filter	Replacement Cycle	Filter Maintenance
1	PP cotton	6~12 months	When the PP cotton surface is dirty please remove and clean the PP cotton cover. It is suggested to flush it from the rear side under the faucet; it should be cleaned at least once a month.
2	Active carbon	6~12 months	It must be flushed with water for over 5min before using it for the first time, install the ultra-filtration filter after it isn't outputting black water.
3	Ultra-filtration	6~12 months	When the ultra-filtration filter outputs water at a lot flow rate (<60ml/min), please remove and clean the ultra-filtration filter. It is suggested to flush it under the tap, carefully swing it when flushing, and avoid flushing it with rapid water. It shall be cleaned at least once a month.

NOTE: The replacement cycle is subject to the local water quality in your area

REPLACING THE FILTER

1. Open the upper cover of the active carbon filter, take out the active carbon, flush the filter housing, then add active carbon according to Step 2 mentioned above
2. Open the ultrafiltration filter, take out the ultrafiltration, replace it with a new ultrafiltration, the method is shown as below:



- 1). Filter housing, seal ring and filter.
- 2). Fix the seal ring on the filter.
- 3). Insert the filter and seal ring into the upper housing.
- 4). Rotate and align the upper and lower housing.

**PLEASE AFFIX YOUR PROOF OF PURCHASE/RECEIPT HERE
IN THE EVENT OF A CLAIM UNDER WARRANTY THIS RECEIPT MUST BE PRODUCED.**

2 YEAR WARRANTY

1 year retail | 1 year

*extended warranty upon
registration**

visit

www.russellhobbs.co.za

W A R R A N T Y AND EXTENDED WARRANTY

1. Home of Living Brands (Pty) Limited ("Home of Living Brands") warrants to the original purchaser of this product ("the customer") that this product will be free of defects in quality and workmanship which under normal personal, family or household use and purpose may manifest within a period of 1 (one) year from the date of purchase ("warranty period").
2. Home of Living Brands shall extend the warranty period for a further period of 1(one) year ("extended warranty period*"), on condition that the purchaser registers the product on the website, within 12 months from the date of purchase of the product. The website address for registration is as follows: <http://russellhobbs.co.za/info-pages/warranty-info.aspx>. The extended warranty period only applies to products purchased on or after 1 October 2017.
3. Where the customer has purchased a product and it breaks, is defective or does not work properly for the intended purpose, the customer must notify the supplier from whom the customer bought the product ("the supplier") thereof within the warranty period or if applicable, the extended warranty period. Any claim in terms of this warranty must be supported by a proof of purchase. If proof of purchase is not available, then repair, and/or service charges may be payable by the customer to the supplier.
4. The faulty product must be taken to the supplier's service centre to exercise the warranty.
5. The supplier will refund, repair or exchange the product in terms of this warranty subject to legislative requirements. This warranty shall be valid only where the customer has not broken the product themselves, or used the product for something that it is not supposed to be used for. The warranty does not include and will not be construed to cover products damaged as a result of disaster, misuse, tamper, abuse or any unauthorised modification or repair of the product.
6. This warranty will extend only to the product provided at the date of the purchase and not to any expendables attached or installed by the customer.
7. If the customer requests that the supplier repairs the product and the product breaks or fails to work properly within 3 (three) months of the repair and not as a result of misuse, tampering or modification by or on behalf of the customer, then the supplier may replace the product or pay a refund to the customer, subject to the supplier's discretion.
8. The customer may be responsible for certain costs where products returned are not in the original packaging, or if the packaging is damaged. This will be deducted from any refund paid to the customer.

HOME OF LIVING BRANDS (PTY) LTD (JOHANNESBURG)

JOHANNESBURG
CAPE TOWN
DURBAN

TEL NO. (011) 490-9600
TEL NO. (021) 552-5161
TEL NO. (031) 303-1163

www.homeoflivingbrands.com
www.russellhobbs.co.za
www.facebook.com/RussellHobbsSA